



safety

MOVING ON THE BATHROOM

help

WALKING AROUND

move support

ON BED

enjoy

DAILY LIFE

share

FREELY EDLER HEATHCARE

2026
catalogue





ABOUT **comon**

Comon is...

located in Zhejiang province, Founded in 2012. Employs more than 100 people, sophisticated modern production equipment, Specializing in the production of wheelchair, walker, walking sticks, Handy Grabber, walking aid and other medical equipment.

it is a company one-stop service of development, production and sales. Products are widely used in medical rehabilitation, disability and environmental protection industries. Our company has paid attention to technological progress and scientific management for a long time. Furthermore, we actively learn from domestic and foreign advanced technology, management experience, and product innovation, to obtain a large and steady market share in fierce competition.

For many years, enterprises have been committed to the development of new products to meet the growing needs of the market. We offer a reliable product quality, and win customers' good reputation. Our products exported to Europe, the United States, Japan, South Korea, South-east Asia as well as Australia and other markets. Company have been certified the BSCI, SEDEX and ISO9001.2015, and also have obtained many internationally recognized certificates for all products, which are complied with relevant European and American approval standards such as CE, MDR, FDA.

We believe "there is no best, only better". Enterprise has always implemented the principles of "customer satisfaction is our eternal pursuit", holding pragmatic cooperation attitude and flexible business strategy and dedication with the new and old customers sincere cooperation.

5



41



15

27



55

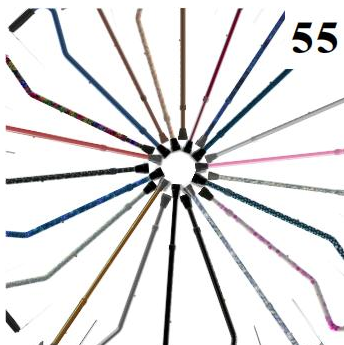




TABLE OF **content**

P.01-02 **About Comon**

P.03-04 **Table of content**

P.05-14 **Bathroom & Bathtub Safety**

P.15-26 **Commode & Toilet**

P.27-40 **Mobility & Travel**

P.41-54 **Sleeping & Living Aid**

P.55-62 **Accessories & Printing Design**



More about Comon

Go to:
www.cncomon.com

Comon medical appliances Co.,Ltd

No.41 Develop Road Wuyi Zhejiang, China
+86.15088231753
sales@cncomon.com





bathroom & bathtub safety

Bathrooms can be a dangerous place, especially for older adults and children. Slippery floors, sharp edges, and hot water are just a few of the hazards that can lead to accidents and injuries.

In this article, we will provide you with a comprehensive guide to bathroom safety, including tips for preventing accidents, choosing the right equipment, and creating a safer bathroom environment for everyone.

bath & shower seat

A shower chair allows a person to sit in the shower while bathing. They are plastic, have at least four nonslip feet, and generally fit fully within the tub or shower. Chairs are available with or without a back and are good for those who may struggle with balancing in the slippery environment.



1



2

1. SHOWER STOOL WITH SPRINKLER

2003

2. SHOWER STOOL BACKREST

2006



1



1



1



2



2



2

shower stool

This is an ordinary shower chair, made of lightweight aluminum material and equipped with anti slip foot covers. The backrest style makes you more comfortable

1. SHOWER STOOL

2001

2. SHOWER STOOL BACKREST

2004

ergonomic seat shower stool

The ergonomic seat offer more convenient cleaning of the body

1. ERGONOMIC SHOWER STOOL

2007

2. ERGONOMICS HOWER STOOL BACKREST

2008

small size shower stool

Small size design provides greater possibilities for e-commerce

1. SMALL SIZE SHOWER STOOL BACKREST

2009

2. SHOWER STOOL BACKREST

2010



1



2



3



handrail shower stool

The armrest design makes it easier for elderly people to get up and sit down, and the rubber pad prevents the body from slipping off the stool surface. Strengthening pipe design to improve product stability and load-bearing capacity.

1. SHOWER STOOL WITHOUT HANDLE

2012

2. SHOWER STOOL WITH HANDLE

2011

3. STRENGTHEN SHOWER STOOL WITH HANDLE

2028



round seat shower stool

The circular stool seat can sit in any direction

1. ROUND SEAT SHOWER STOOL
2015



detachable shower stool

Detachable legs can provide more convenient and fast assembly without affecting packaging

1. DETACHABLE SHOWER STOOL
2029



rotating shower stool

Rotate 360 degrees without moving

1. TOTATING SHOWER STOOL
2022

round shower seat

The circular stool surface design has no restrictions on position and direction, providing greater possibilities for narrow spaces and bathtubs. 13.4"/20.9" height adjustment, also made of lightweight material and anti slip foot covers



step stool

As you age, it becomes more difficult to raise your legs and feet. The risk of falling when these people enter the bathtub comes with it. The standing stool is a great solution and provides a range of adjustable sizes for selection

1. **STEP STOOL**
2016

2. **STEP STOOL ADJUSTABLE**
2017



2-step stool

Some bathtubs are higher, or some people can't lift their legs higher. In this case, the two-step stool will be more suitable. And it comes with a safer handrail model for choice

1. **STEP STOOL**
2033

2. **STEP STOOL ADJUSTABLE**
2033H





short grip bathtub seat

The bathtub seat is a type of stool that spans over a bathtub. Small in size and easy to install, it is loved by many bathtub enthusiasts. You can sit on it to take a shower, or have a glass of red wine or food while soaking in the bathtub

1. SHORT GRIP BATHTUB SEAT
2013



angeld bathtub seat

This angled design not only has the normal function of a bathtub seat, but can also be inverted and assembled into a standing stool .It can be adjusted in two sizes, 28.3 inches and 32.3 inches, depending on the width of the bathtub. Extending the handle cover allows for a larger grip on the ground

1. ANGELD BATHTUB SEAT
2014



detachable transfer bathtub seat



The Plastic Tub Transfer Bench with Backrest has four individually-adjustable legs to sit level at the optimal height for each individual regardless of the height difference of the tub floor and bathroom floor. The bench provides a stable, secure surface to assist individuals with mobility limitations in and out of the tub, allowing them to retain more of their freedom and independence. The back can be attached to either side of the bench, and both arms are independently removable, allowing the chair to be left- or right-handed to suit any bathroom orientation.

The most important thing is that this product adopts a fast assembly design, which solves the problem of difficult assembly of this product. With just a few pipes assembled, this product can be quickly completed

1. **TRANSFER BATHTUB SEAT**
2019

transfer bathtub bench

The three piece shower bench is an extended shower bench that is mainly convenient for people with insufficient lower limb strength to support themselves in and out of the bathtub. One end of the product is placed in the bathtub, and the other end is on the ground outside the bathtub. It has a large suction cup design that firmly sucks the ground, allowing users to quickly enter and exit the bathtub through the armrest



1. TRANSFER BATHTUB BENCH

2018

2. BATH BENCH SHOWER BRUSH

201801



quick assembly bath chair

E-COMMERCE HOT SALE



To meet the demands of e-commerce, we have designed this second-generation quick-install shower chair based on the first generation and have applied for a patent. This shower chair is extremely easy to install and has no additional restrictions. Most people can quickly install it without a manual, and the packaging fully complies with Amazon's e-commerce standards while ensuring the product's normal load-bearing capacity

1. QUICK ASSEMBLY BATH CHAIR

2019-1





commode & toilet

A commode is a portable toilet situated next to a bed. It provides an alternative to a standard toilet in a bathroom. If it's too difficult for your loved one to get to and use the bathroom safely, they could benefit from a portable commode.

This alternative benefits people with serious mobility issues. A portable commode may be useful for someone with an injury or recovering from surgery, for instance. It can also be helpful for someone with cognitive deficits or incontinence.

Like other home care aides, a commode can be a useful tool that helps older adults stay home longer. These tools keep them safe and aid hygiene, so you can delay the transition to assisted living.

Toilet safety frames are frames which are placed over and around the toilet to give you support when you either sit down on, or stand up from the toilet. Some models are also combined with a raised toilet seat.

commode & shower chair

The toilet chair is a kind of chair used for people who cannot move long distances, such as the elderly and the injured who cannot get up. Some have wheels to facilitate movement at any time, and some use waterproof materials for bathing



commode & shower chair

This is a weighted toilet chair, HDPE and aluminum pipe material, it has both the toilet chair and bath chair two functions, and also has the toilet height function. Special screw tightening structure allows the product to be installed quickly and very solid

1. COMMODE AND SHOWER CHAIR
5003





mobility commode

CARBON STEEL

This is a toilet chair with wheels, painted with iron technology, has a higher load bearing. The separate toilet can be used both on the chair and on the toilet.

A separate cushion, which can be used as a chair when you do not go to the toilet

Why choice

Using a commode chair offers more safety for the user and the caregiver.

When loss of autonomy occurs, the biggest risks are falls and serious injury.

Loading capacity

400LBS

Color choice

Our regular colors have gray, blue, and we accept solid color customization

Material

PU seat and handrail, steel painted
PU silent Omni-directional wheel, back



1. COMMODE CHAIR
5001GRY



2. COMMODE CHAIR
5001BLU



3. COMMODE CHAIR
5001RED

commode chair

Carbon steel toilet chair, convenient for people who can not get up or avoid long distance walking at night. It can be folded quickly, and the model with wheels can be used as the function of a wheelchair





1



2

commode chair

The folding toilet chair is a regular model. In order to better serve more people, we have upgraded the adjustable width model for choice. It is a very popular American model

1. COMMODE CHAIR

5006

2. COMMODE CHAIR

5006EXT

mobility commode chair

Blow-molded panel toilet chair, this upgraded version with wheels. It expands the mobility of the toilet chair, making it more suitable for people who cannot move independently. The product structure is simple, quick to fold, and cost-effective

1. COMMODE CHAIR

5013

2. MOBILITY COMMODE CHAIR

5012



1



2



raised toilet seat

This product is designed for individuals with lower back discomfort who cannot bend over, such as pregnant women, the elderly, and those with back injuries. With the toilet elevated, it becomes much easier to sit down and stand up. For those who can not bear any pressure on their lower backs, we have specially designed a model with handrails. For those who are heavier, the handrails are extended to touch the ground

raised toilet seat



1



2



3

The injection-molded smooth-faced toilet height enhancer comes in three sizes, depending on the toilet's height. The surface is smooth, injection-molded, and hollow with ultrasonic welding, providing a visually comfortable look. The design is manually engineered to perfectly match the shape of the buttocks. It features a knob-type snap-fit design.

- 1. **COMMODE AND SHOWER CHAIR**
60012
- 2. **COMMODE AND SHOWER CHAIR**
60014
- 3. **COMMODE AND SHOWER CHAIR**
60016



TOILET RISER WITH ARM
6002

Simple toilet height enhancer with handrail design. Need to be installed on the toilet with screws



TOILET RAISED WITH ARM
6003

Strengthened toilet height enhancer with handrail design and internal card knob. Large hollow blow molding wide flat design



TOILET RAISED SEAT WITH ARM
6004

Heavy-duty toilet height enhancer with handles. Height adjustable. Four feet on the ground for better, larger and safer support

toilet chair & handrail

The biggest problem for elderly, pregnant women, and some people with limited mobility is the inability to sit down and get up on the toilet. They must rely on a raised toilet to sit down safely and stand up on the handrail next to the toilet after finishing. This device effectively solves the troubles of these people



toilet seat & chair

The toilet chair adopts a quick assembly design, with left and right 2-speed adjustment suitable for various sizes of toilets, and 8-speed height adjustment suitable for people of various heights. The 300 pound load-bearing design meets the needs of most people. The seat cushion is made of very soft material and offers backrest styles for selection

- 1. TOILET CHAIR
5005
- 2. TOILET SEAT
5004



toilet handrail

The toilet armrest still adopts a quick tool free installation design, which can be used immediately by placing it on the toilet. The bottom adopts a large suction cup design, which can firmly absorb the ground during use. The 300 pound load-bearing design helps most people stand up quickly. And when the product is completed for use, it can be quickly folded up without affecting the use of others who do not need it



1

1. TOILET HANDRAIL
2032

2. TOILET HANDRAIL BAG
203201



2



COMON I 25





toilet handrail

Simple toilet armrest

1. TOILET HANDRAIL
2025



toilet handrail

Simple toilet armrest

1. TOILET HANDRAIL
2026



steel toilet handrail

The steel toilet armrest is welded with round pipes, and the two curved pipes are more firmly attached to the toilet. Blue and white designs are fashionable and beautiful

1. STEEL TOILET HANDRAIL
2034



steel toilet handrail

The iron material makes this product more stable and load-bearing, and the clamping devices on both sides can firmly clamp the armrest onto the toilet without shaking. The width and height can be adjusted as needed. The part that fits the toilet adopts a curved design to make the product fit better

1. STEEL TOILET HANDRAIL
2035







mobility & travel

As individuals age, many develop chronic, complex illnesses, including deconditioning, and may need to use a mobility assistive device. Assistive devices such as canes, crutches, walkers, and wheelchairs can help to alleviate the effects of mobility limitations, providing improved independence.

According to data from the National Health and Aging Trends Study, 29.4% of adults 65 years and older reported using assistive devices within the previous month when outside the home, and 26.2% reported using them inside the home. An adult should understand how to select the appropriate assistive device

quad cane

Aquad cane has four small feet extending from the base that make it more stable. It can handle more weight bearing and increases the base of support and stability. This design, which can be purchased with a small or a large base, is an advantage when navigating stairs. Also, when you sit or need to free your hands, the cane stands by itself so you don't have to bend down to pick it up. This kind of cane is especially helpful for seniors and anyone affected by vertigo, partial paralysis, hemiplegia, stroke, or who are recovering from hip or knee replacement surgery.



1. QUAD CANE SMALL BASE

1006

2. QUAD CANE LARGE BASE

1005

offset cane

An offset cane handle has a more ergonomic grip than a standard crook handle. Via the bend in the cane shaft, these handles are positioned over the length of the shaft, allowing for even weight distribution along the shaft. With the weight centered, pressure is taken off the hand and wrist. These padded handles reduce strain on your wrist and provide a comfortable grip, coming in multiple styles and shapes





decarative offset cane

The curvature design of this cane determines its difficulty in printing, We have an exclusive transfer printing method to print on this offset cane. Can achieve no color fading within 2 years and provide customized decors. This cane can also be made in solid colors, such as the popular glossy black, blue, and pink colors to choose from.

1. **OFFSET CANE 515**
1003515

3. **OFFSET CANE 516**
1003516

5. **OFFSET CANE BLU**
1003BLU

7. **OFFSET CANE PNK**
1003PNK

2. **OFFSET CANE 517**
1003517

4. **OFFSET CANE 518**
1003518

6. **OFFSET CANE 514**
10035147

8. **OFFSET CANE 564**
1003564

A person wearing a white long-sleeved button-down shirt and light-colored trousers is sitting on a silver folding stool. They are holding a black cane with a curved handle. The person is wearing brown leather loafers. The background shows a window and a potted plant.

circular hook cane & seat cane

A tourist handle is also known as a crook or a "J" handle cane, a shepherd's cane, or a hospital cane. These canes are commonly used to help alleviate general pain from standing and walking. They also are counted on to assist with balance. They are simple and traditional and very common.

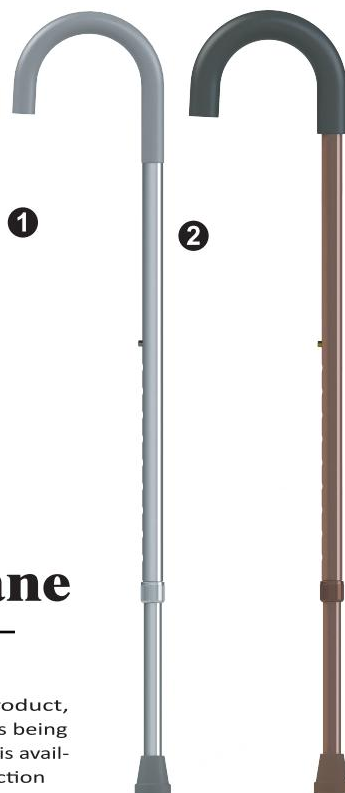


walking seat cane

For anyone who enjoys venturing out and wants to accommodate the need to stop and rest, a walking cane with a seat is a game changer. Also called a walking cane chair or a seat cane, this type of cane greatly contributes to mobility and independence. The seat eliminates barriers by making longer outings possible and comfortable for cane users.



1. WALKING SEAT CANE
1012



crook walking cane

1. CROOK WALKING CANE WITH PVC HANDLE
1004SL
2. CROOK WALKING CANE WITH EVA HANDLE
1004BRN

This is a very traditional product, with the usual popular colors being silver and brown. The handle is available in PVC and EVA for selection.



soft-grip folding cane

1. **SOFT GRIP FOLDING CANE PURPLE**
1001PUR
2. **SOFT GRIP FOLDING CANE PRINTING**
1001DBU
3. **SOFT GRIP FOLDING CANE PRINTING**
1001LPD
4. **SOFT GRIP FOLDING CANE BLACK**
1001BLK

The soft rubber handle design makes this product more comfortable to use, and the surface sandblasting process makes the product more textured. Compared to most men's solid color choices, women are more willing to choose our printing process. Printing technology makes products more fashionable.

For the convenience of storage and carrying, we have designed a self-pulling cloth bag for choice.

A person wearing a white t-shirt, white pants, and white sneakers is walking on a paved path. They are holding a black walking cane with three white stripes down the center. The cane has a Fritz handle, which is a T-shaped grip. The person is also carrying a dark blue bag. In the background, there are green plants in a planter.

fritz handle walking cane

A Fritz handle can be used on a variety of canes, including single tip canes, folding canes, and those made of just about any material. They resemble the letter T when viewed from the side, and were designed by a German Count in the 1700s to make using a cane more comfortable for someone with arthritis. This open-ended styled handle allows for more room for the user's fingers, and the slight curve rests comfortably in the palm. Sometimes this kind of cane is called a crutch handle cane. There are currently two main materials available: wood and plastic

soft grip offset cane

Fully rubber handle offset cane, bottom is fully soft plastic four feet. Adapt to a variety of ground conditions and can stand on its own

1. **SOFT GRIP OFFSET CANE**
10034009



soft grip folding quad cane

Rubber quad tip cane, foldable design, self-standing base on the heavy rubber tip, easy to fold and carry

1. **SOFT GRIP FOLDING QUAD CANE**
10014005



soft grip tripod cane

All terrain foldable tripod walking cane. The bottom is designed with full aluminum. 360-degree rotation is suitable for various ground environments and can be quickly installed using a knob, which can be replaced at any time

1. **SOFT GRIP TRIPOD CANE**
1013







full soft grip folding cane

1. **FULL SOFT GRIP FOLDING CANE PRINTING**
1015LOTUS
2. **FULL SOFT GRIP FOLDING CANE BLACK**
1015BLK
3. **FULL SOFT GRIP FOLDING CANE PRINTING**
1015RED VEIN
4. **FULL SOFT GRIP FOLDING CANE PRINTING**
1015GRN VEIN
5. **FULL SOFT GRIP FOLDING CANE PRINTING**
1015PUR VEIN

The derby grip handle features innovative technology that decreases shock and reduces fatigue in the hand and upper body. The ergonomic cane handle is adaptable for right- & left-handed users.



wooden handle folding cane

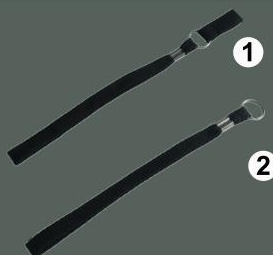
The wooden handle folding cane, with a glossy black oxidation, is currently the most widely used and widely used cane in the market. It is suitable for all people in need, can be used to assist walking, and can also be used to decorate oneself. Folded up for easy portability, the aluminum alloy material makes it only weigh about 350g.

1. WOODEN HANDLE FOLDING CANE 1016



STORAGE BAG
101603

When no crutches are needed, the cloth bag can store the crutches for easy carrying and protect them from damage when dropped



WRIST LOOP
101601/101602

The wrist strap can be fastened on the hand to prevent the cane from slipping or falling off



ICE TIP
101604

Crutch accessories, convenient for walking on ice or slippery muddy roads

crutch

Injuries can happen to anyone at any time. If you go to a hospital for treatment, the doctor will probably plaster the fractured area of your bone. After that, you will probably need a pair of crutches. When you injure the lower limbs of your body, such as your ankle or knee or any other joint, you might feel uncomfortable while walking. You need forearm and elbow crutches that can be adjusted to reduce the discomfort caused by the plaster. This type of plaster will also help you in walking when you will be recovering from the injury.

1. **CRUTCH**
1010BLU





soft grip crutch

For someone who is injured in the leg and unable to move normally, all of their strength is focused on the palm of their hand while moving. Therefore, an excellent elbow is particularly important. The palm support part of this elbow is made of soft rubber, which effectively shares the pain caused by weight. The circular design of the arm effectively wraps around the handle, making movement more flexible

1. SOFT GRIP CRUTCH 1011BLK



crutch

Aluminum elbow (forearm) with gradual height adjustment. crutch. It is designed to deliver safe support for persons who need additional stabilization during walking. It is available in gray and blue.

1. CRUTCH 1017BLK







sleeping & living aid

According to the statistics 61% of people would like to stay in their own home if they reached a point where they could no longer live safely by themselves.

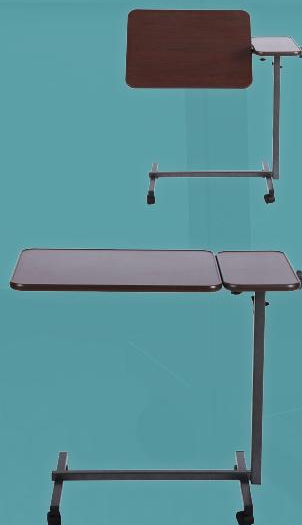
With the help of independent living products, as well as medical technology, and some assistance from other people, seniors can retain a certain level of independence. By increasing independence, and thus dignity, elderly are likely to feel more confident and happy. Which is why these assistive devices make great gifts too



2-piece design bedside table

the hospital bed table also provides a large, stable surface for mealtimes and other activities when recovering from an illness, injury or surgery. Height adjustable, the over bed table utilizes four swivel castors to easily position it for left- or right-handed use at any bed, sofa or chair. Constructed with a durable steel frame with a laminate top, the bedside table is easy to assemble with illustrated step by step instructions.

1. 2-PIECE DESIGN BEDSIDE TABLE
3001





bedside table

Classic style bedside table, quick tool free assembly

1. **BEDSIDE TABLE WHITE**
3002WHT
2. **BEDSIDE TABLE GINGER**
3002GIN



square base bed table

Flexible movement of small base bedside table, suitable for smaller gaps

1. **SQUARE BASE BED TABLE WHITE**
3003WHT
2. **SQUARE BASE BED TABLE GINGER**
3003GIN



bedside table

SWIVEL

This type of bedside table and legs can be adjusted in multiple directions to suit more scenarios. The large knob design makes it easy to lock the height

1. COMMODE CHAIR

3024

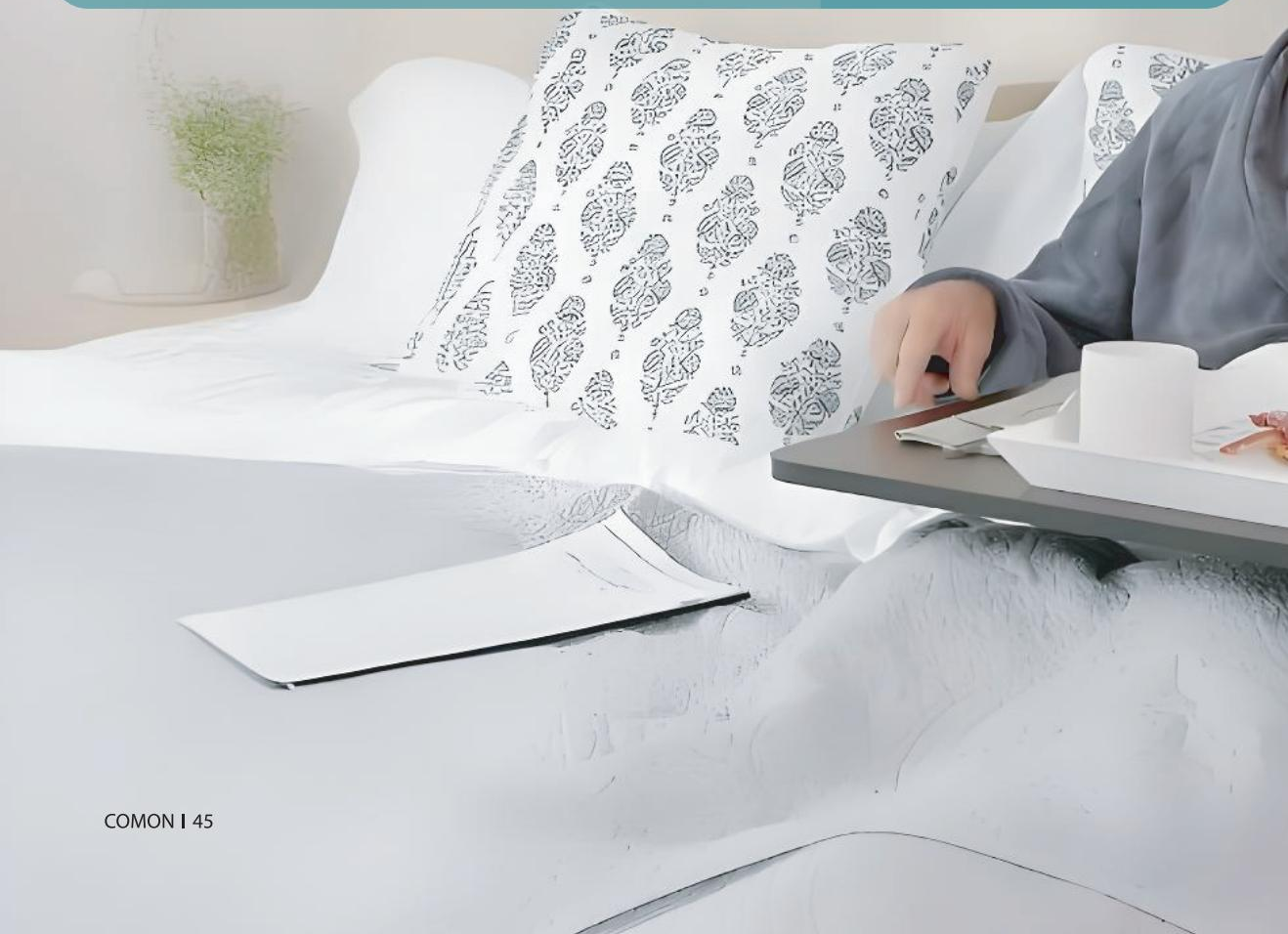
2. MOBILITY COMMODE CHAIR

3025

STEPLESS BEDSIDE TABLE

3026

The hidden wheels on the legs of this bedside table are suitable for moving in smaller spaces, and the height is adjustable to any required height using a cylinder design







CIRCULAR BED HANDLE

3004

One of the popular styles, with a simple structure. Lightweight use



BED HANDLE

3005

Popular e-commerce styles with small and fully functional packaging, and a handle added on the side for the convenience of physically weak people to hold onto and wake up



STRENGTH BED HANDRAIL

3006

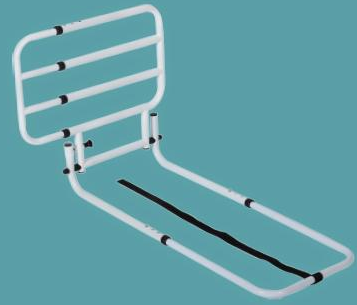
This product is designed with a larger part that is fixed to the bed, and the handle part has a greater load-bearing capacity



bed support

Getting up and turning over are simple actions that are not easy for the elderly or patients lying in bed. A product that provides auxiliary support is particularly important. A bedside table is a product that prevents elderly people or patients from falling during night rest and provides support for those who have difficulty moving while lying in bed





STEEL BED HANDLE
3007

Traditional European style steel design



ALUMINIUM BED HANDLE
3008

Lightweight aluminum handrails and cloth bag design make it convenient to store some commonly used items



BED HANDLE
3009

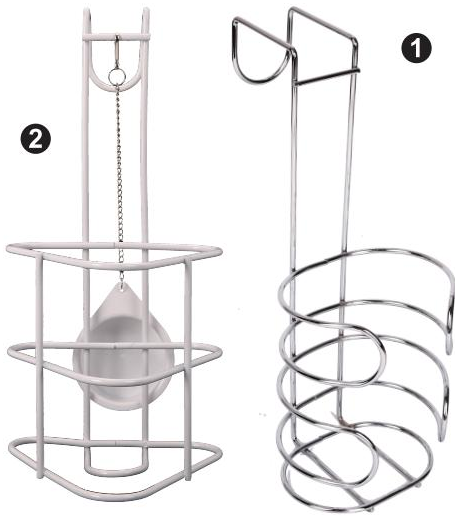
E-commerce style, small packaging volume, suitable product size



bed backrest

When you need to lean on the bed to read or work, or when people with limited mobility need to do some tasks done in bed, maintaining unsupported movements for a long time can cause back pain and lower back pain. the bed backrest can provide consistent comfort and relief

1. **BED BACKREST**
3010



urine bottle holder

Getting up to use the toilet at night time can be a struggle for most, particularly bedridden people, sufferers of mobility issues, and elderly individuals. The Wire Urinal Bottle Holder for Bed Headboards, can help to prevent this need hanging neatly over the majority of headboards, for use day and night without risk of spills. Featuring a plastic coating for easy cleaning, this design upholds hygiene at home and in care while promoting convenience for patients and carers

1. URINE BOTTLE HOLDER
3011
2. URINE BOTTLE HOLDER WITH LID
3012



sock aid

Bending down to tie shoelaces or pull on a pair of socks gets harder with age; dressing yourself with the Sock Aid helps prevent over-extension from bending down to pull on your favorite pair.





cloth sock aid

Blue Oxford cloth allows feet to smoothly slide into socks.
White cotton fabric can firmly support socks

1. CLOTH SOCK AID 3013

plastic sock aid



PE plastic smooth surface, nylon
rope and sponge handle

1. PLASTIC SOCK AID 3014

steel sock aid

Stable steel structure, able to stand
on the ground and complete the
process of putting on socks with
feet extended in

1. STEEL SOCK AID 3015



handy grabber

No shelf is out of reach when you use the Grip 'n Grab. With this arm extension, you can get items down from high spots or from the floor without losing your grip or suffering a tragic fall.



foldable handy grabber

This is a very popular soft rubber design that can firmly grip items of various shapes and is easy to carry when folded. The handle is also a comfortable soft rubber

1. **FOLDABLE HANDY GRABBER**
3016



magnetic reacher

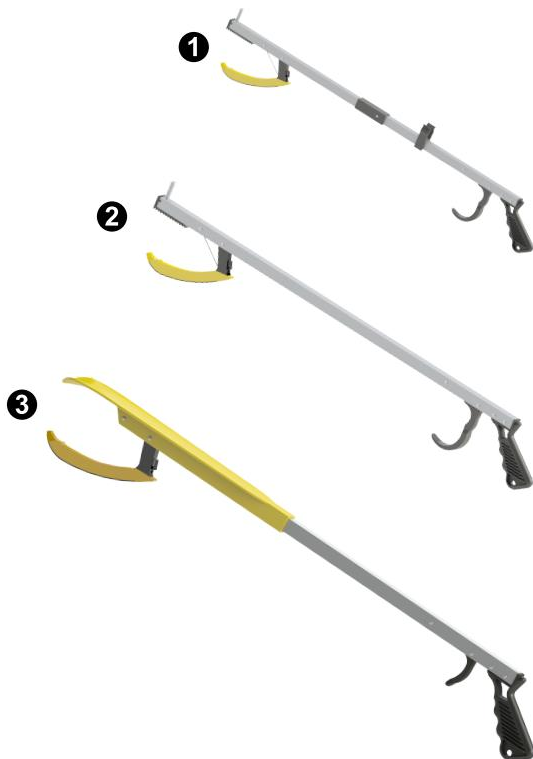
The scissor shaped design allows for picking up very small things. The strong magnetic field on the head can easily attract keys and coins

1. **MAGNETIC REACHER**
3017



square handy grabber

Square groove design, compact and easy to carry. The opening can be adjusted according to the object being grabbed. And there are shoe pull styles to choose from, making it a great helper for people with limited mobility



1. **SQUARE HANDY GRABBER FOLDING**
3019
2. **SQUARE HANDY GRABBER UNFOLDING**
3018
3. **SQUARE HANDY GRABBER SHOES HORN**
3020



HIP KIT
3021

Basic daily necessities set, include handy grabber, dressing aid, shoes horn, scrubbing bar and sock aid



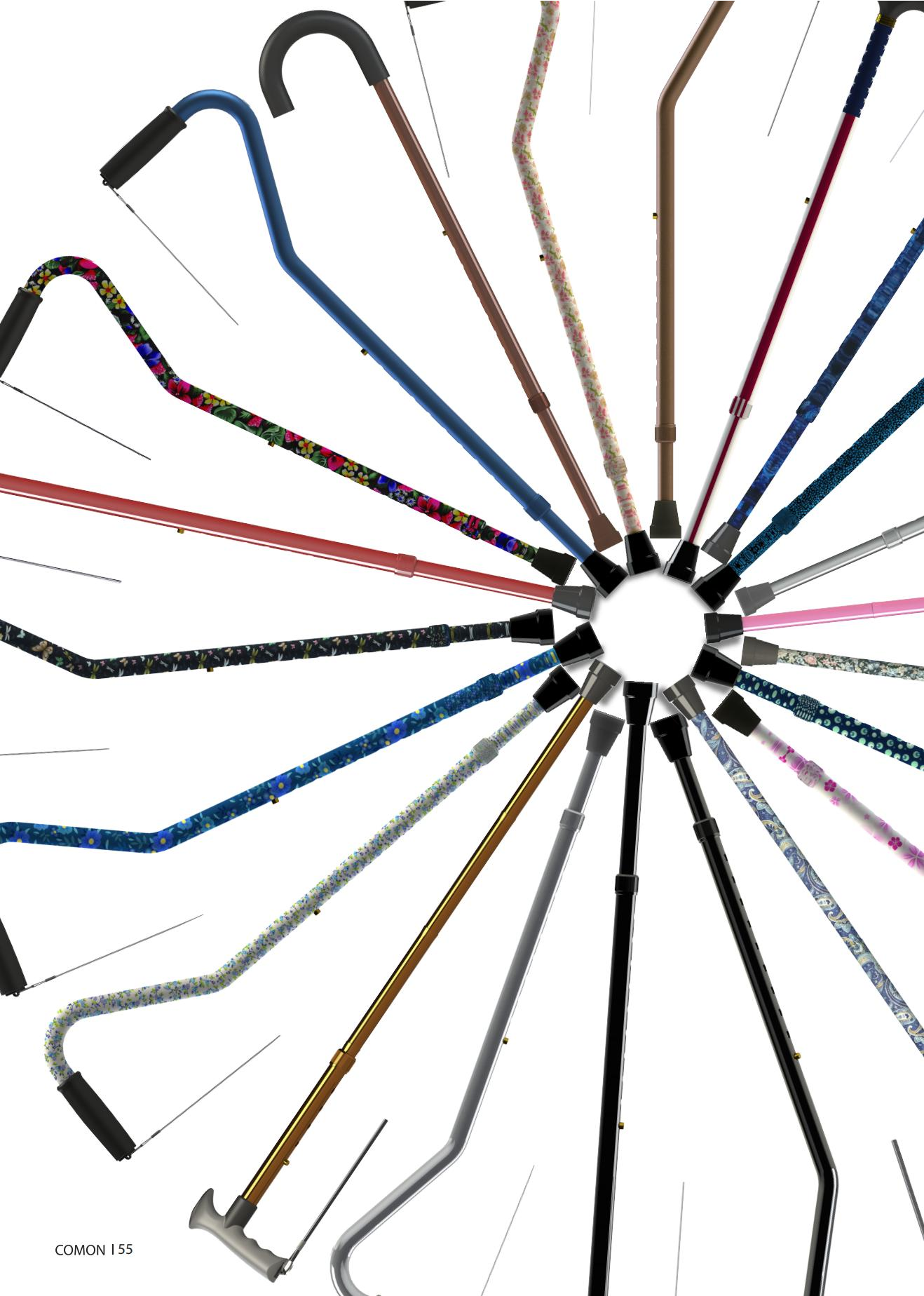
HIP KIT
3022

Basic daily necessities set, include handy grabber, dressing aid, steel shoes horn, scrubbing bar, sock aid and shoelaces



HIP KIT
3023

Basic daily necessities set, include folding handy grabber, dressing aid, shoes horn, scrubbing bar and cloth sock aid





accessories & printing design

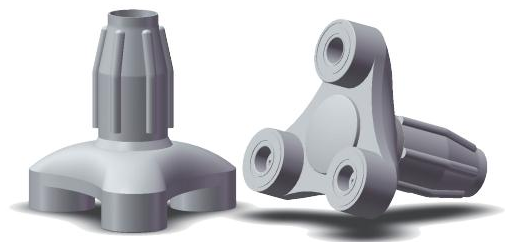
All products are consumables and wear parts, so we provide replacement parts for all consumables to extend the service life of products and reduce their usage costs, better serving product users

antiskid rubber tip

Antiskid tips are essential for stability and traction. Rubber tips, also known as a cane ferrule, are almost always on a walking cane, stick and shower stool. Choosing the right size, rubber material, and tread is essential to purchasing a antiskid tip. Ensuring they are not worn out is also fundamental to safely using a cane or chair and avoiding accidents.



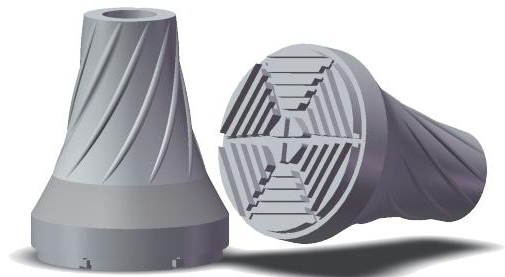
trusty cane tip



Trusty Cane is the one cane you can trust to provide secure, reliable support on any surface. Trusty Cane's triple tread base is designed to improve stability for a more natural stride wherever you go. Ordinary cane tips can slip when you walk, but Trusty Cane's unique pivot lets the cane move with you while the triple tread base holds its grip.

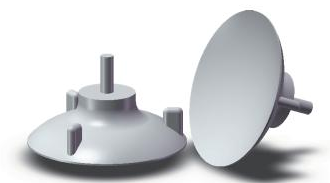
1. TRUSTY CANE TIP 4001

heavy cane tip



This rubber pad is designed with thickened bottom to effectively reduce the vibration of the ground to the handle. It is assembled in two parts and can adapt to the walking environment 360 degrees,

2. HEAVY CANE TIP 4002



suction cup tip

Large suction cup footrest, firmly suction on the ground, used for bathroom shower benches

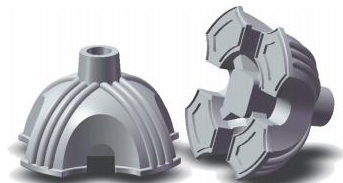
1. SUCTION CUP TIP 4003



large base tip

Large base footrest, commonly used in products such as shower benches, toilet chairs, etc

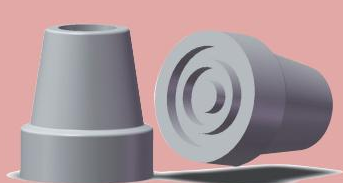
1. LARGE BASE TIP 4004



trusty cane rubber tip

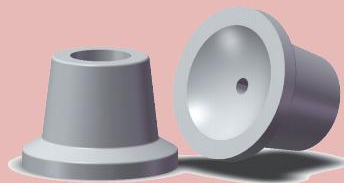
Rubber four legged leg covers are suitable for most crutches and can be replaced at any time. The weight of 400g provides excellent standing support for most crutches

1. TRUSTY CANE RUBBER TIP 4005



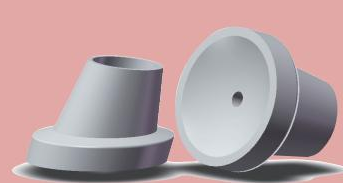
WALKING CANE TIP 4006

Regular crutch leg covers are available in black, gray, and coffee colors. The rubber wear-resistant material is suitable for various weather and ground conditions



SHOWER CHAIR TIP 4007

The most widely used regular shower bench leg cover is sturdy and durable. Rubber material exhibits excellent grip on wet surfaces



SHOWER CHAIR TIP 4008

Angled shower stool foot cover, suitable for angled shower stools, providing better anti tipping ability for the stool



SOFT GRIP HANDLE
5001

Soft rubber handle, currently one of the most commonly used plastic handles, provides excellent palm cushioning with its soft rubber design



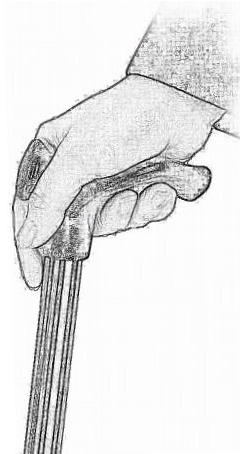
SOFT GRIP HANDLE
5002

Fully covered adhesive handle, one of the popular styles of cane handle



PLASTIC HANDLE
5003

The most conventional plastic handle with a frosted surface design. Good strength and high load-bearing capacity



left and right handle

The left and right handles are unidirectional crutches designed based on human hands. He is only suitable for left or right hand use, but provides a good fit for the handle, making it tighter and more comfortable to hold in the hand



1. RIGHR HANDLE
500401R
2. LEFT HANDLE
500401L

3. LEFT HANDLE
500402L
4. RIGHT HANDLE
500402R

wood handle

Conventional wooden handle



1. WOOD HANDLE
5006

wooden handle

The most common and popular wooden handle cane, suitable for all crutches. Wood material makes crutches more upscale



bird handle

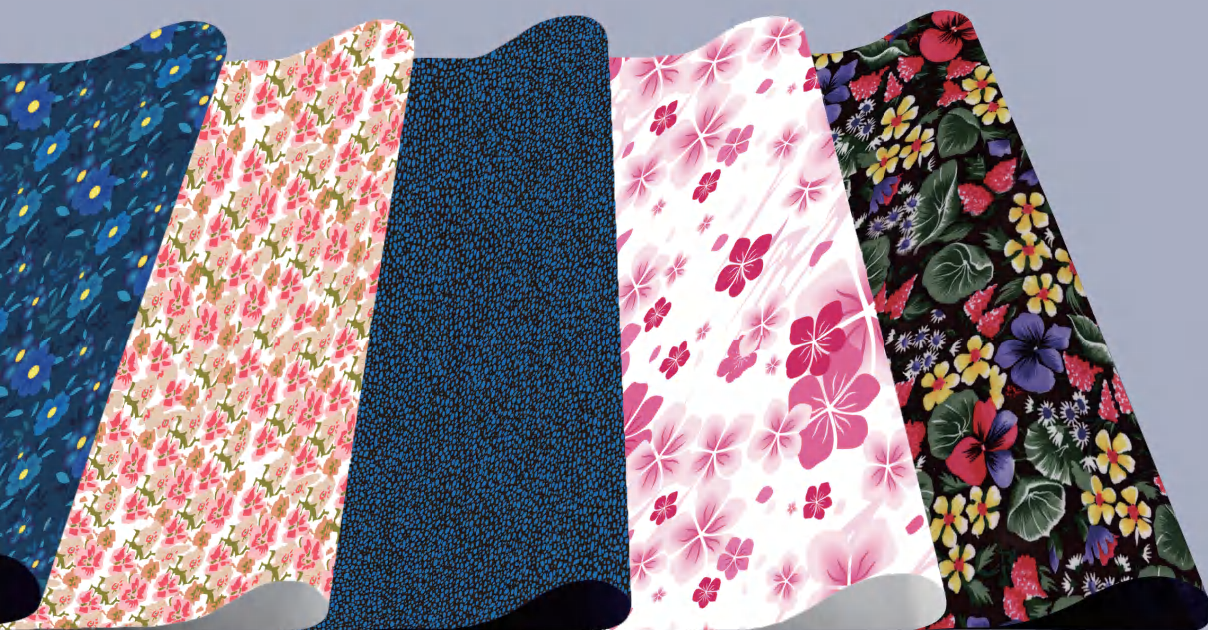
Bird shaped handle

1. WOODEN HANDLE
5005

1. BIRD HANDLE
5007

walking cane handle

We offer a vast selection of different types of walking canes for our customers, and we want to ensure you are comfortable with your selection. It will help you make the right selection. Some cane handles are designed for comfort while others are made to be stylish and look great. It all depends on what you want from your cane.







COMON medical appliances Ltd

No .41 Development Road
Baihuashan Industry Zone
Zhejiang China
+86(579)87928238
sales@cncomon.com